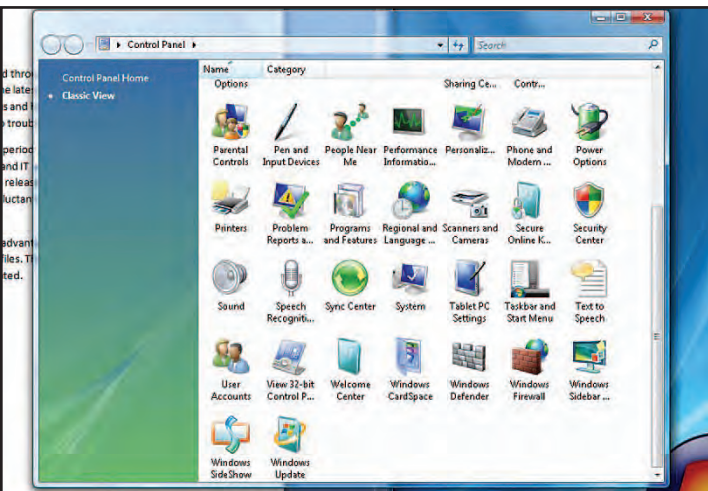


Using Vista's Shadow Copy



Many of the new computers that are on sale now in stores and through online vendors like Dell and Gateway-- come pre-loaded with Microsoft Windows Vista, the latest operating system offered from the software giant.

While it is much-maligned from

technical gurus and hard core

users of Windows XP, it is a capa-

ble and very secure system that

most users will have no trouble

with.

Microsoft has announced

recently that they've extended

the period vendors like Dell can

offer Windows XP pre-installed

by six months, to mid-2008.

Corporate users and IT staff have

been the loudest opponents of

Vista—this later date will give

Microsoft time to release the

Service Pack of upgrades in the

first quarter of 2008. With the

Service Pack, companies reluc-

tant to adopt Vista hope to see

their issues with the software

addressed.

Vista offers some powerful

tools for the average user to take

advantage of. One such is

Shadow Copy. If you have it prop-

erly set up, you can retain earlier

versions of files. These Shadow

Copy versions can be recovered

later if the original is accidentally

deleted or corrupted.

Once configured, Shadow

Copy is sort of a last-ditch effort

to recover documents lost inad-

vertently. It doesn't take the place

of proper backups. A second

internal hard drive or an inex-

pensive memory stick is good

insurance against data loss. I use

a 1 GB SanDisk USB memory

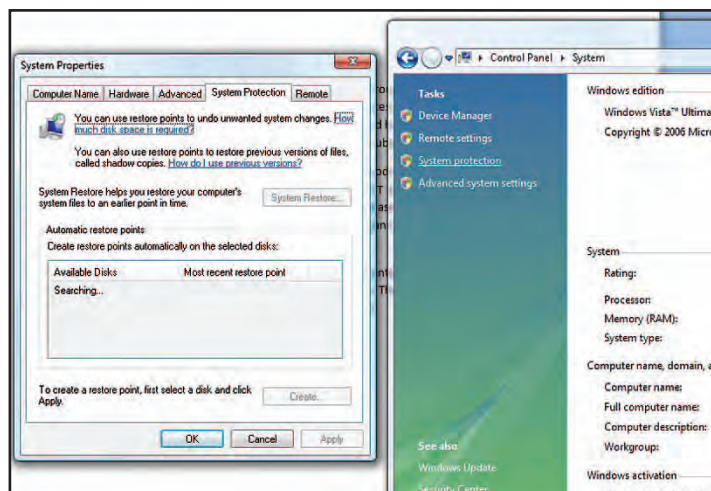
stick to temporarily store files at

the end of the day, before the

this service does require some resources and will use some drive space. By clicking the help links in the panel, you can learn how much space will be needed.

After you have checked the drives for which System Restore and Shadow Copy will be used—and I'm not sure why they are lumped together here—your computer will begin keeping track of the previous versions of documents you have saved. It's not immediate-- obviously you have to have more than one version of a file for this to work. But at some point down the road, when the PowerPoint presentation you created refuses to open, you'll have a "saved copy" if you didn't back it up.

Remember, that in order for it to have worked, a System Restore point needs to have been created since the file was created. So you should take a moment to make

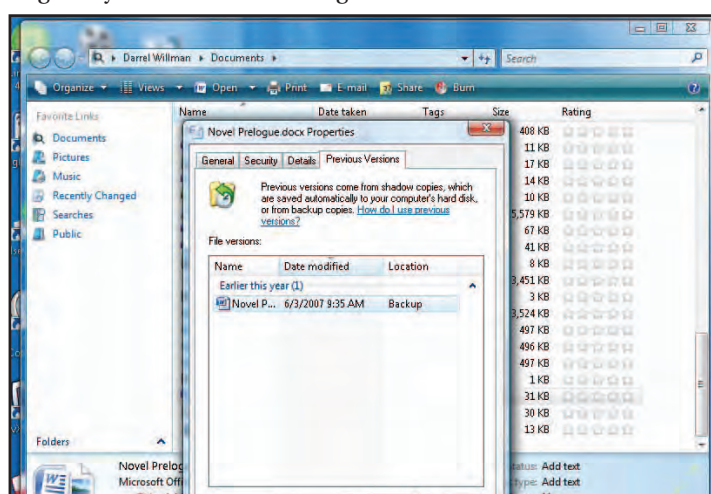


Enable Shadow Copies in the same Control Panel as System Restore.

backup application kicks in during the overnight hours.

To make sure Shadow Copy is enabled and running, under Control Panels select "System". Opening the system properties, on the left you will find "System Protection". Inside this control panel you can set up System Restore and Shadow Copy settings for your hard drives. Using

sure the drives are checked you want to keep track of. You also have the ability to create a System Restore point at any time, by clicking the button in the System Protection panel. Remember also, that this "shadow copy" is a previous version—and so it may not reflect the recent changes – or any changes – you have made to the document.



There's no guarantee it will be there but right-click a file and select "properties".

Two new restaurants serve the Lake



Michael Ismail (right) and Brent Boyles, also owners of Michael's Steak Chalet, are the owners of the new Michael's 939 restaurant.

continued from page 56

Says Ismail, "Brent and I have known each other since second grade. We're great friends and business partners. I'm the outgoing marketer and he's the linear thinker - he's got a spread sheet for everything."

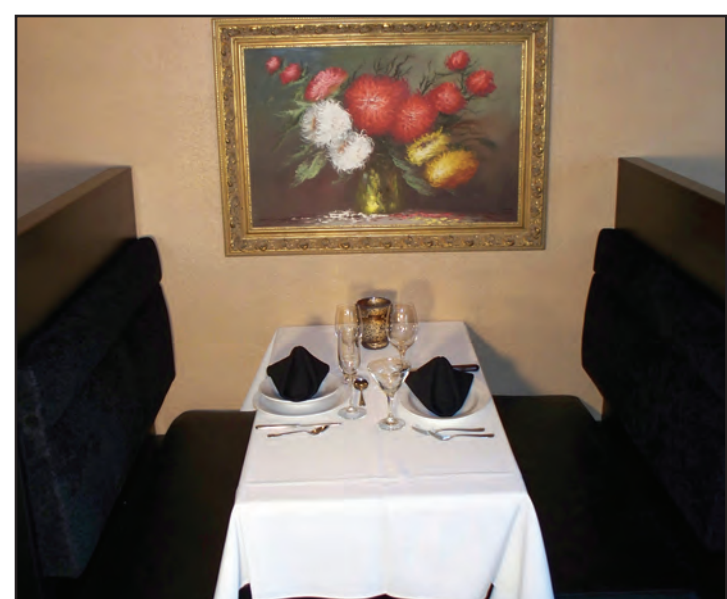
Any similarities to other restaurants, Ismail hopes eradicate with the amazing transformation Michael's 939 has undergone from the building's old days as Tres Hombres. "We don't want to be predictable. We don't want to be another 'me too' restaurant. We want to change the way people perceive dining at the lake."

If the décor is anything to judge by, they have certainly ac-

complished those goals. Decorated by Nancy Wilson, one of the designers of Randy Thompson's Champs d'Or Castle, the restaurant is nothing less than Sinatra era sexy and elegant with soaring ceilings, mocha colors, amber lighting, wood floors, dark eight inch wood moldings, stone accents and special paint finishes. There are massive antique furniture pieces located throughout the restaurant, beautiful watercolor paintings, white linen tablecloths, black seated tables with candlelight and crystal. Absolutely beautiful to look at.

This gorgeous restaurant has also more than met the 21st

continues next page



"Sinatra Sexy" and elegant with decorating ala Nancy Wilson awaits diners at the new Michael's 939.